

# Do you use English Street bridge at night or on the weekend?

VicRoads advises of changes to the way you use English Street bridge to access Essendon Fields and Airport West at night and on the weekends.

We need to complete preparation works ahead of the removal and reconstruction of the bridge in January 2017.

This will mean full bridge closures at night and partial bridge closures on the weekend impacting access in and out of Essendon Fields. Plan ahead and allow extra travel time as detours will be in place.

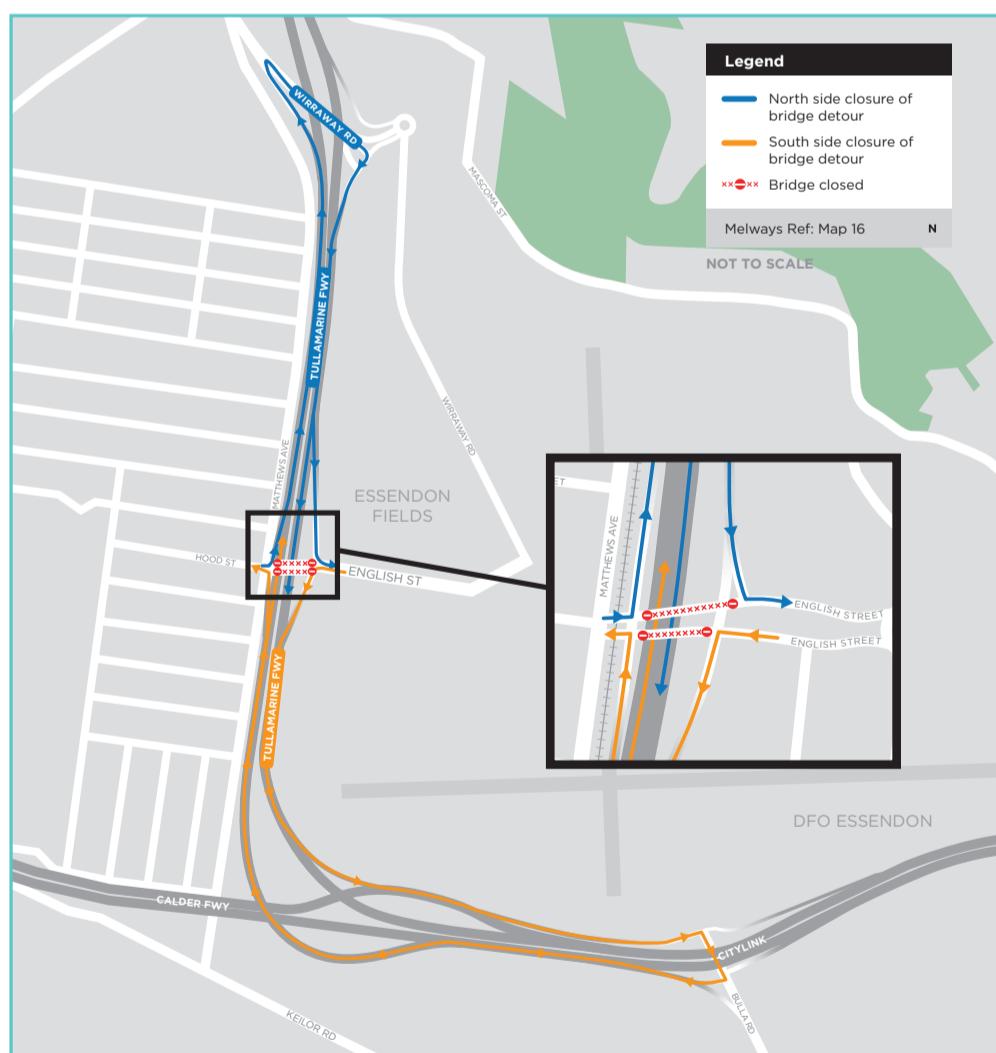
There will be no impact to you from Monday to Friday, between 6am and 8pm. Access will be available at all times to and from Essendon Fields using Wirraway Road.

**Work starts 23 September until mid December.**

For more information including detour maps, check our website at [citylinktullawidening.vic.gov.au](http://citylinktullawidening.vic.gov.au), or call 1300 783 947 and select option 2.

## English Street bridge nightly full bridge closures

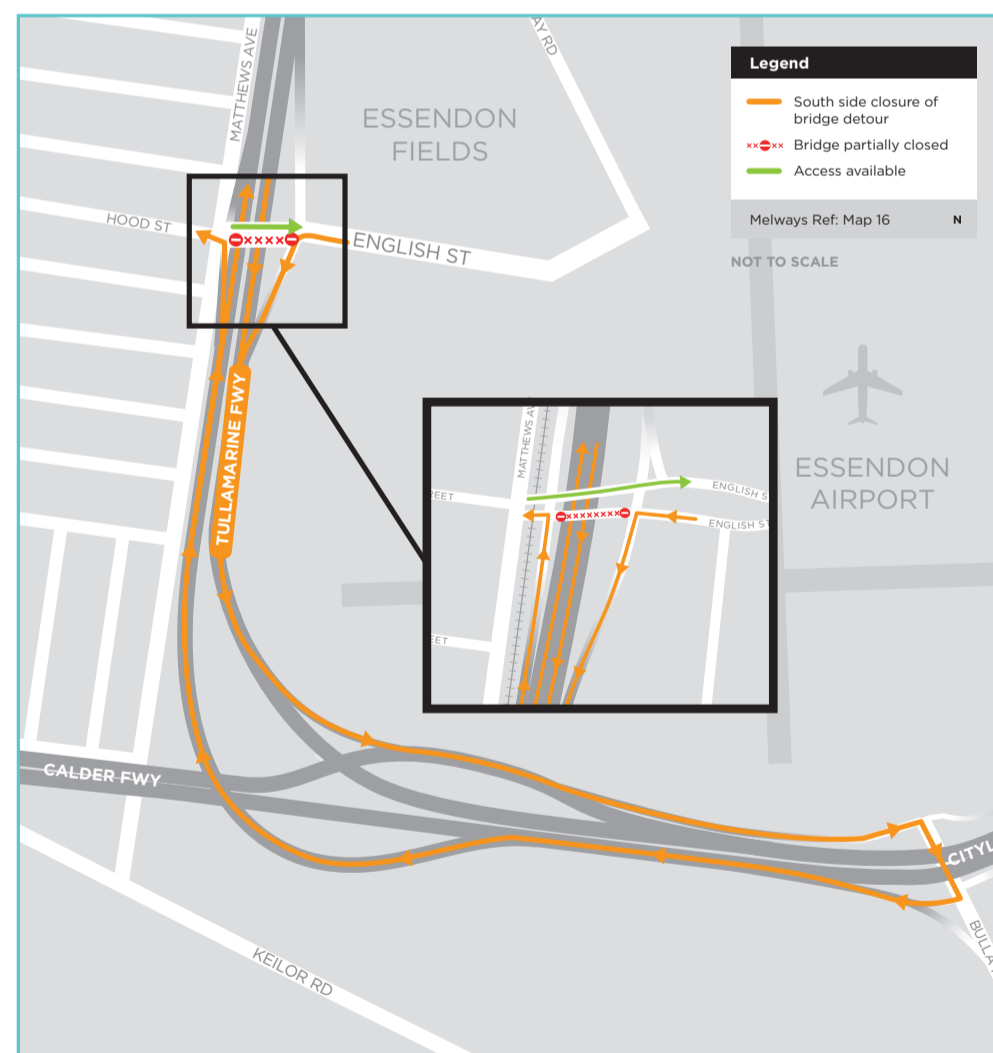
When: Monday to Thursday nights, 8pm-6am



## English Street bridge weekend partial closures

(Affecting those exiting from Essendon Fields)

When: 8pm on Friday nights to 6am on Monday mornings



CityLink Tulla Widening



Australian Government

**BUILDING OUR FUTURE**

**CityLink**  
Linking Melbourne

**vic roads**

**VICTORIA**  
State Government